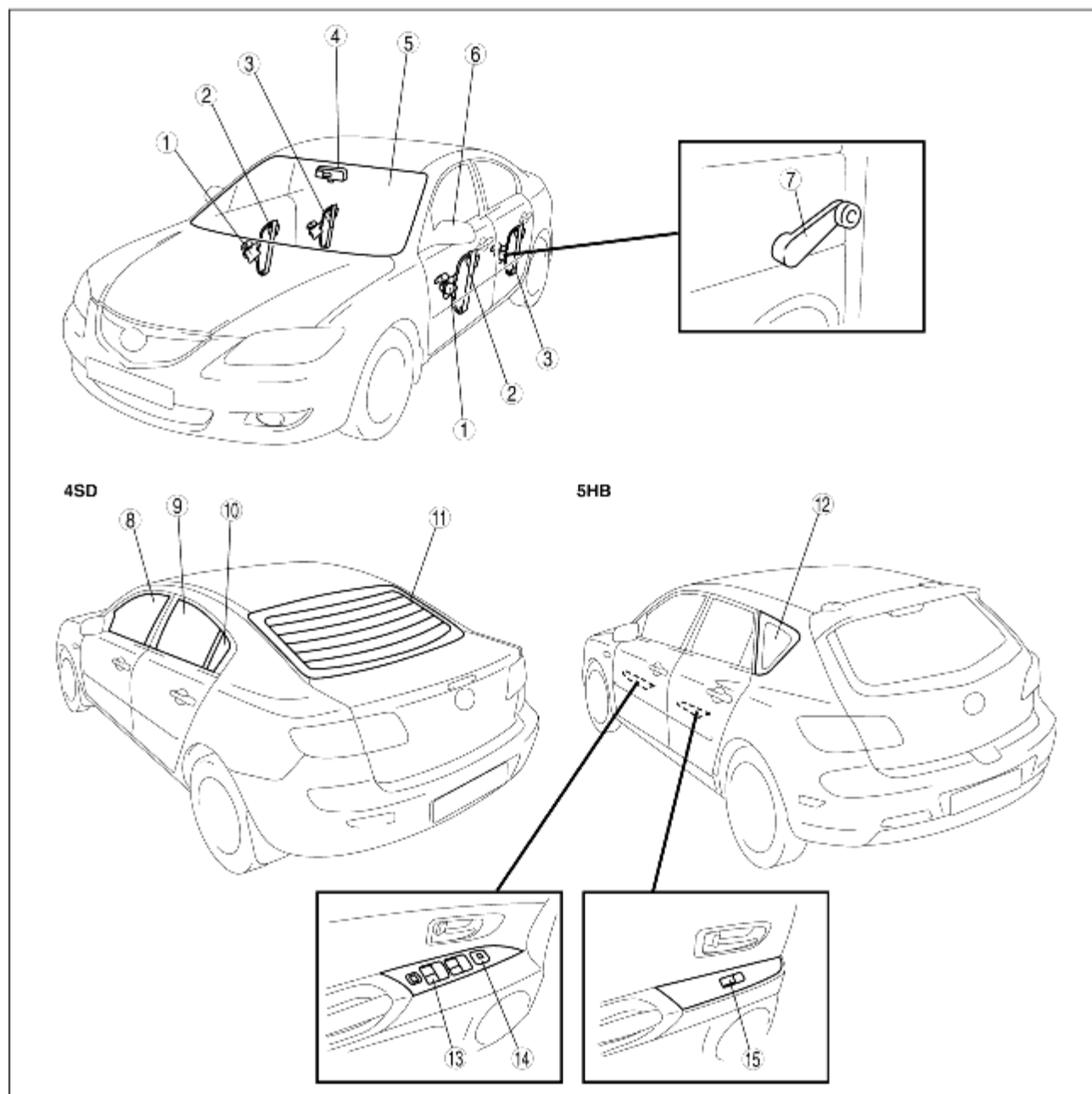


LOCATION INDEX

B3E091200001W01



B3E09 12WA04

1	Power window motor (See POWER WINDOW MOTOR REMOVAL/INSTALLATION.) (See POWER WINDOW MOTOR INSPECTION.)
2	Front window regulator (See FRONT POWER WINDOW REGULATOR REMOVAL/INSTALLATION.) (See FRONT MANUAL WINDOW REGULATOR REMOVAL/INSTALLATION.)
3	Rear window regulator (See REAR POWER WINDOW REGULATOR REMOVAL/INSTALLATION.)

	(See REAR MANUAL WINDOW REGULATOR REMOVAL/INSTALLATION.)
4	Rearview mirror (See REARVIEW MIRROR REMOVAL/INSTALLATION.)
5	Windshield (See WINDSHIELD REMOVAL.) (See WINDSHIELD INSTALLATION.)
6	Power outer mirror (See POWER OUTER MIRROR REMOVAL/INSTALLATION.) (See POWER OUTER MIRROR ASSEMBLY/DISASSEMBLY.) (See POWER OUTER MIRROR INSPECTION.)
7	Regulator handle (See REGULATOR HANDLE REMOVAL.) (See REGULATOR HANDLE INSTALLATION.)
8	Front door glass (See FRONT DOOR GLASS REMOVAL/INSTALLATION.)
9	Rear door glass (See REAR DOOR GLASS REMOVAL/INSTALLATION.)
10	Rear door quarter glass (See REAR DOOR QUARTER GLASS REMOVAL/INSTALLATION.)
11	Rear window glass (See REAR WINDOW GLASS REMOVAL.) (See REAR WINDOW GLASS INSTALLATION.) (See FILAMENT INSPECTION.) (See FILAMENT REPAIR.)
12	Quarter window glass (See QUARTER WINDOW GLASS REMOVAL.) (See QUARTER WINDOW GLASS INSTALLATION.)
13	Power window main switch (See POWER WINDOW MAIN SWITCH REMOVAL/INSTALLATION.) (See POWER WINDOW MAIN SWITCH INSPECTION.) (See POWER WINDOW SYSTEM INITIAL SETTING.) (See TWO-STEP DOWN FUNCTION OPERATIVE/NON-OPERATIVE SWITCHING PROCEDURE.) (See DOOR GLASS POSITION CHANGE PROCEDURE.)
14	Power outer mirror switch (See POWER OUTER MIRROR SWITCH REMOVAL/INSTALLATION.) (See POWER OUTER MIRROR SWITCH INSPECTION.)
15	Power window subswitch (See POWER WINDOW SUBSWITCH REMOVAL/INSTALLATION.) (See POWER WINDOW SUBSWITCH INSPECTION.) (See POWER WINDOW SYSTEM INITIAL SETTING.) (See TWO-STEP DOWN FUNCTION OPERATIVE/NON-OPERATIVE SWITCHING PROCEDURE.) (See DOOR GLASS POSITION CHANGE PROCEDURE.)